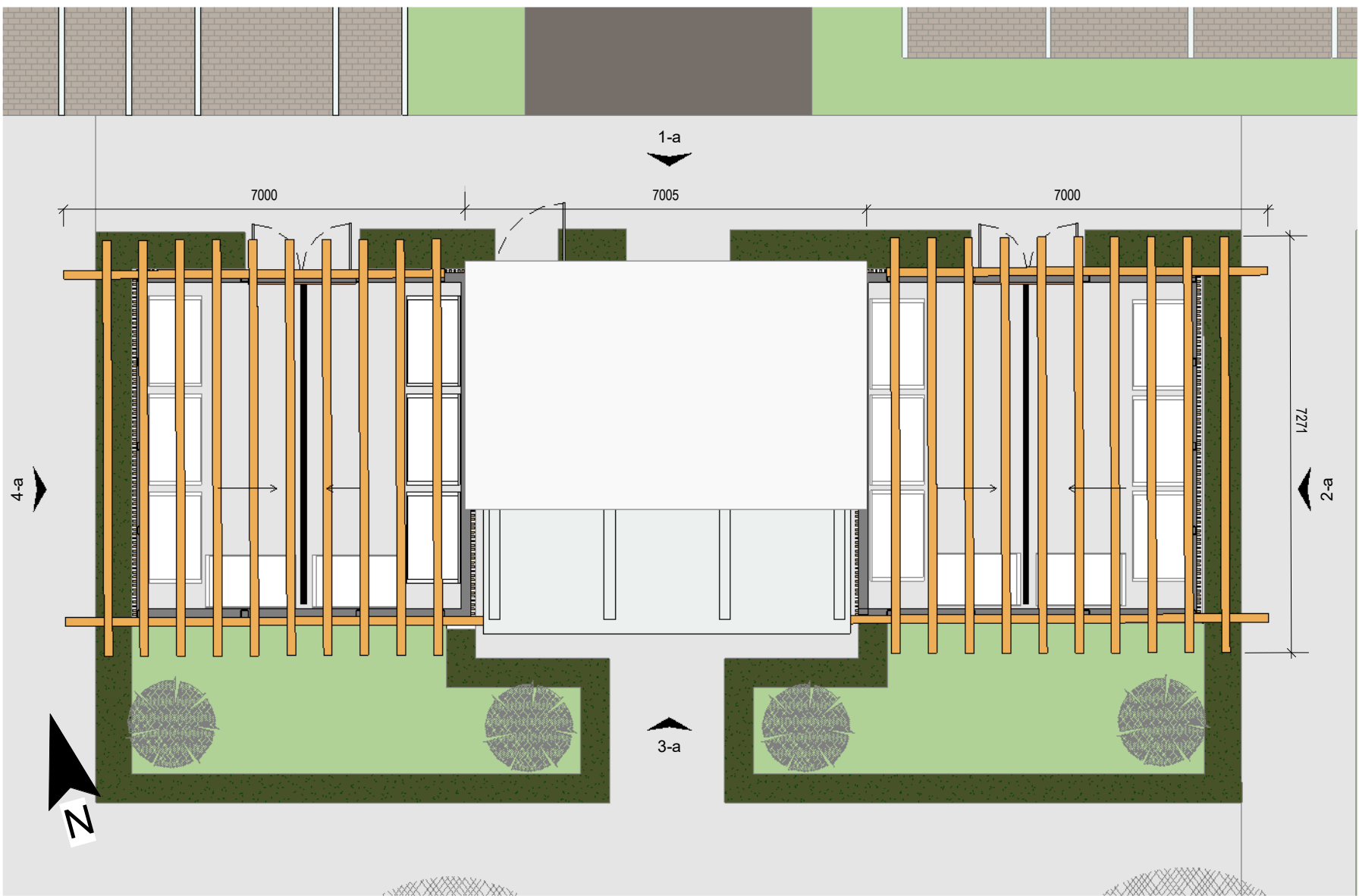
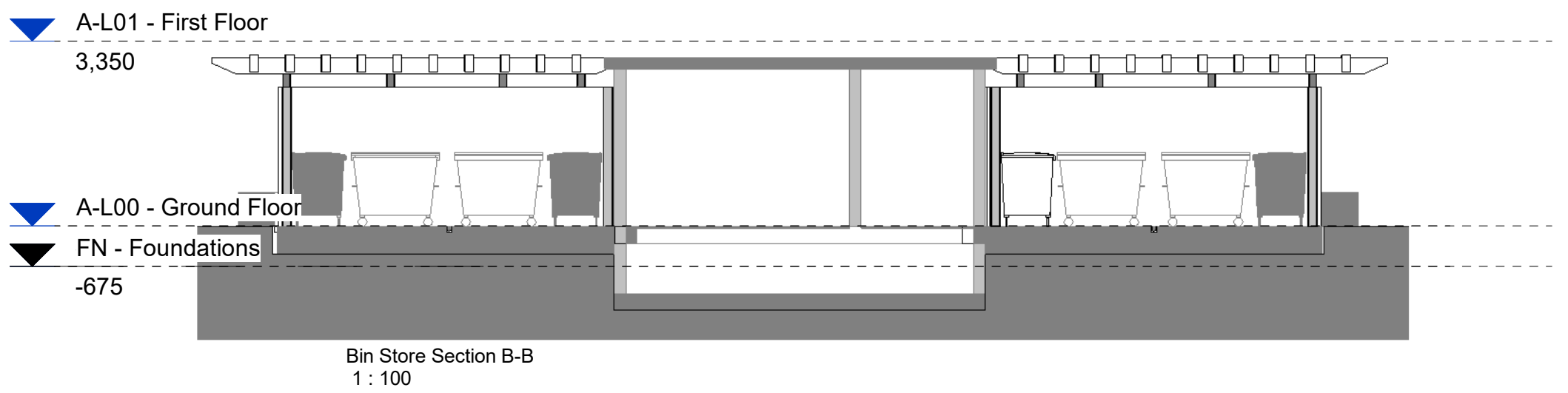
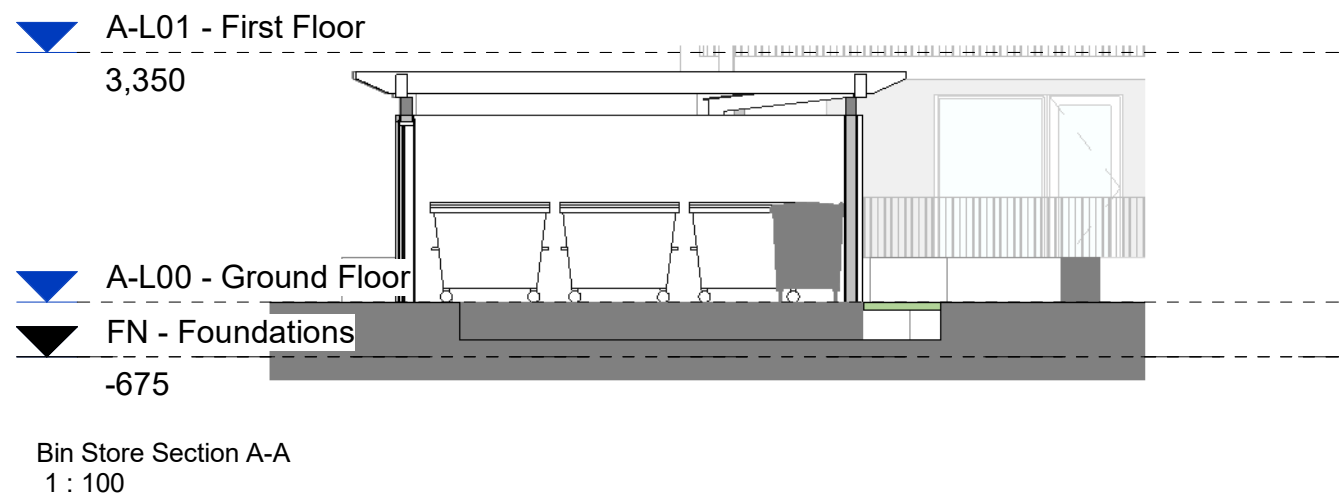
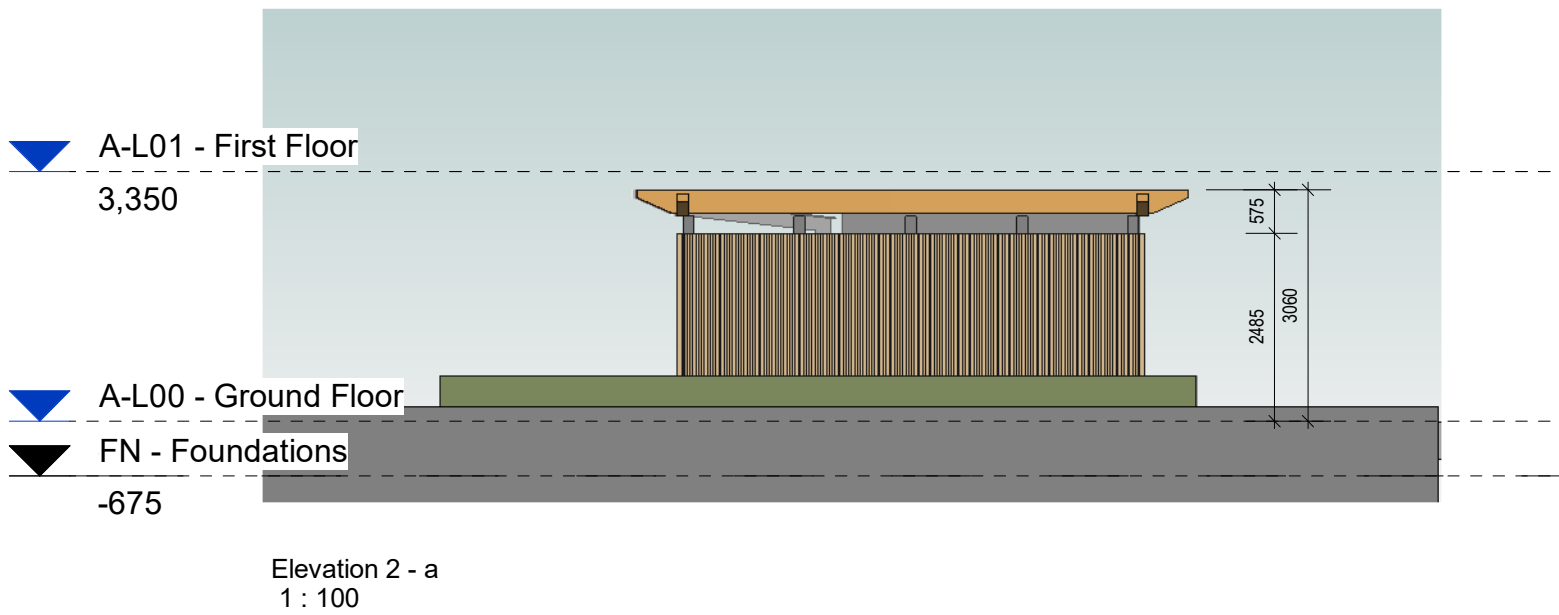
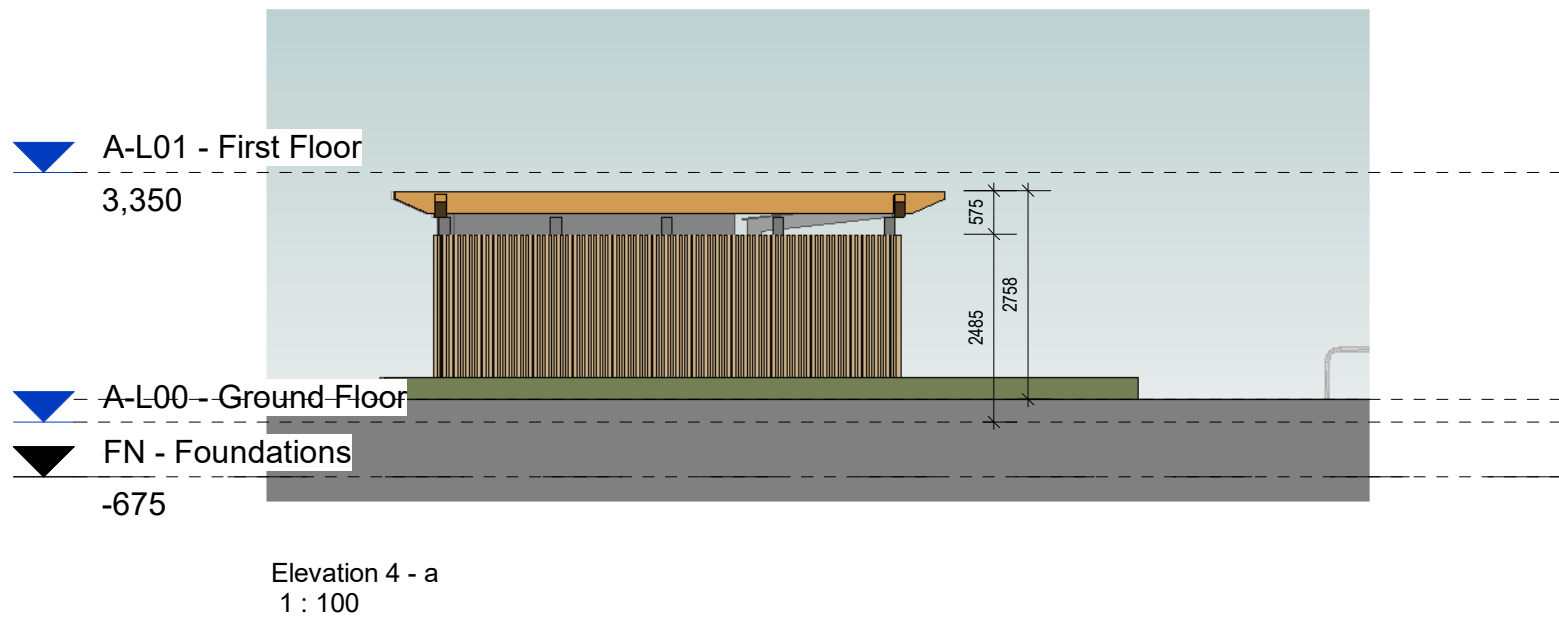
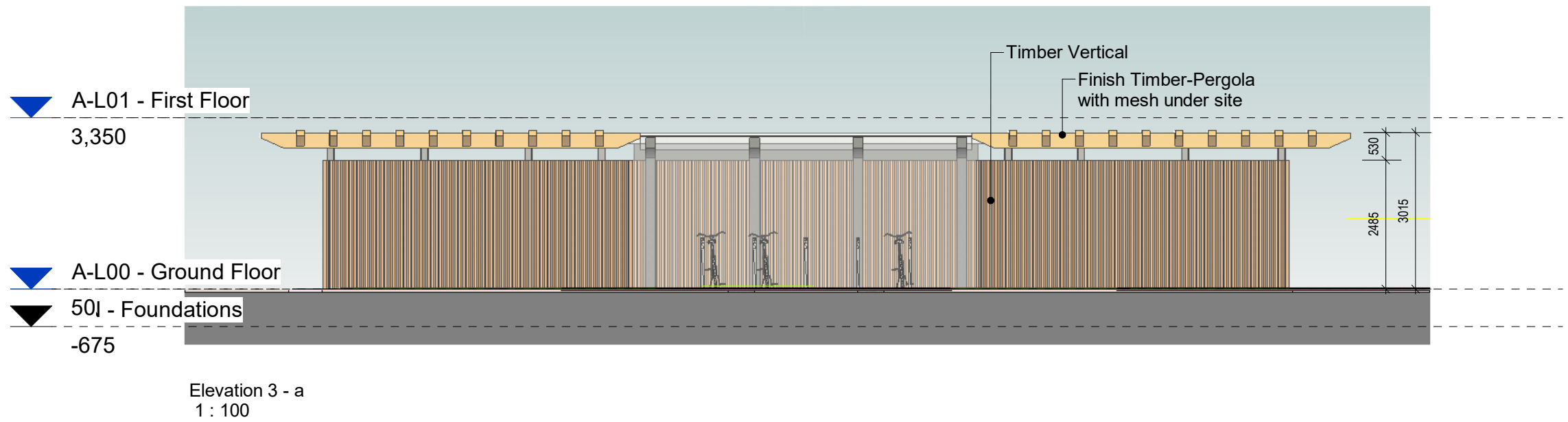
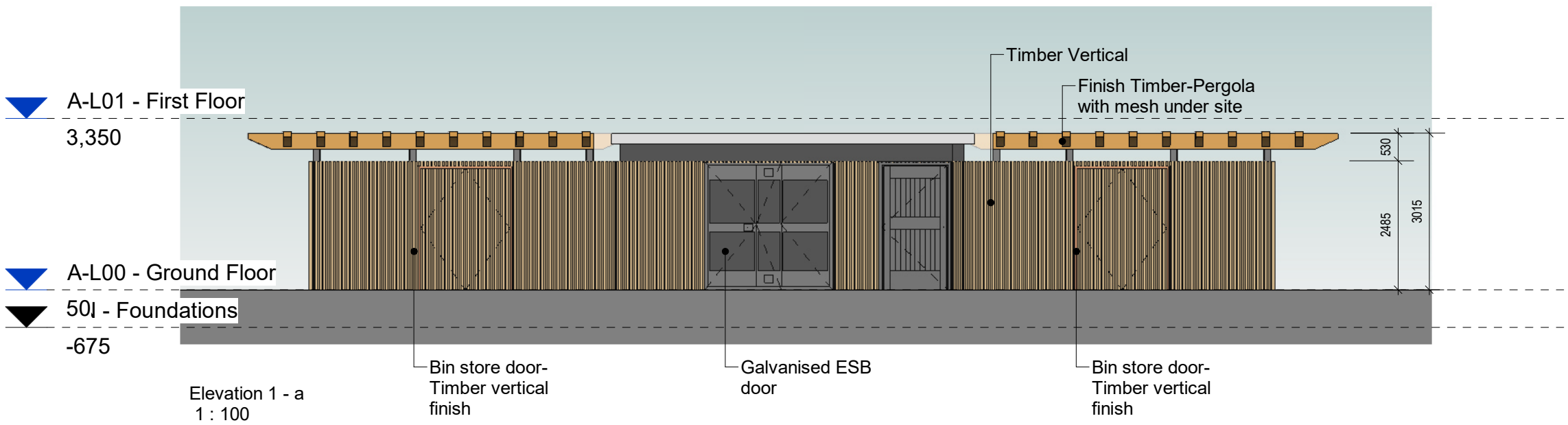


BIN STORE
1 : 100



BIN STORE_ROOF
1 : 100



Notes:

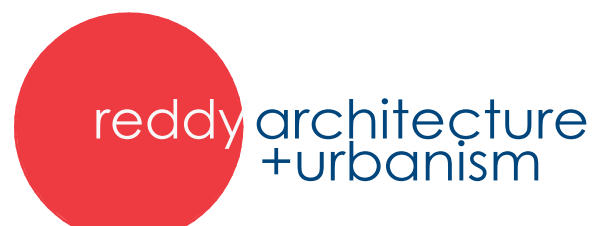
- Do not scale from this drawing. Use figured dimensions in all cases.
- Verify dimensions on site and report any discrepancies to the Architect immediately.
- This drawing to be read in conjunction with the Architect's Specification.
- © This drawing is copyright and may only be reproduced with the Architect's permission.

Drawing Notes:

Refer to windows, doors and curtain walling schedules for more information on details and types. Refer to all other referenced architectural drawings for more information.

Refer also to all other consultants drawings, specifications, reports and schedules including: Walsh Goodflow for structural and civils, Renaissance for MEP information, JGA for fire strategy information, Ryan & Associates for DAC information, AIT Urbanism & Landscape for landscape plan boundary details & Amplitude Acoustics for Acoustics.

Issues & Revisions			
Rev.	Date	Drawn	Details of Issue / Revision
P2(S-1)	FEB 2025	CO	Issued for Planning



Dartry Mills,
Dartry Road
Dublin 6,
D06 Y0E3

T: +353 (0)1 498 7000
W: www.reddyarchitecture.com
E: info@reddyarchitecture.com

Client Details:
Voyage Property Limited,
Ashbourne Hall,
Dock Road,
Limerick.

Project Details:
Greenpark Apartments - Blocks A & B
Limerick

Drawing Title:
Proposed Bin Store Plans, Sections & Elevations

Job No. P20-133D	Sheet Size: A1	Scale @A1: 1:100
Issue Date: FEB 2025	Drawn By: CO	Reviewed By: RQ

Status P7	Purpose of Issue Planning Application
Project-Originator:Zone-Level-Type-Role-Classification-Number GPL-02-AB-XXX-DR-RAU-AR-3360	
Revision P2(S-1)	